

Nursery Update



Dear Parents and Carers,

It's been an exciting time at nursery, we've been very busy behind the scenes and created our very own sensory room! The children will have opportunity to access the room in small groups to explore the resources and take part in activities in a very calming environment.

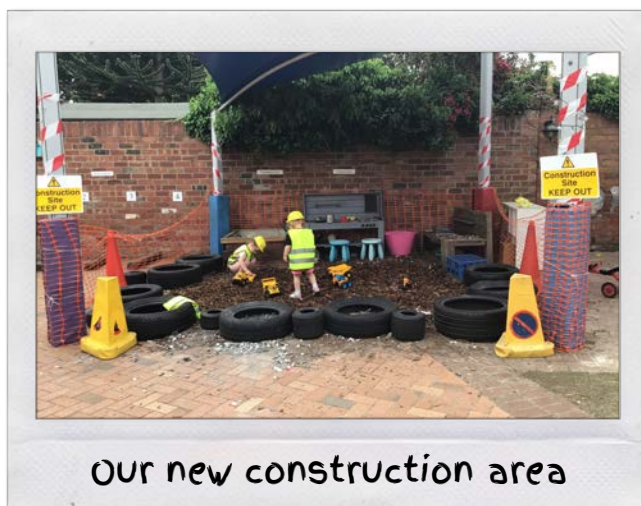
We have also been developing our garden and the children are particularly excited about our new construction area. This area gives the children the opportunity to explore different textures and use their imagination. So far it has been a massive hit and we can't wait to keep expanding it.

Please can we politely remind parents not to park on the lane as this causes congestion during drop offs and collections.

On this newsletter you'll find some key dates for your diary! As well as the latest nursery news! Keep up to date on our Facebook page @SmallWorldHatfield

Warm wishes,

Gemma and the Small World Team



Our new construction area

Key Dates

Thursday 17th June World Cupcake Day

The children will be baking, decorating and most importantly eating cupcakes!



Friday 18th June World Picnic Day

Bring along your favourite teddy, we'll enjoy a teddy bears picnic tea.



W/C Monday 28th June Wimbledon

All week the children will be taking part in different games involving bats and balls and eating strawberries and cream.



Thursday 1st July The Big Toddle!

We will be taking part in Barnardo's big toddle by completing 5 laps (or more) of the nursery garden. It is safari themed so please wear your favourite animal print or safari costumes. It is a fantastic cause and any donations will be greatly appreciated. If you would like a sponsor form please speak to a member of staff from your child's room.

Tuesday 13th July Super Hero & Princess Day

Please come and support Crackerjacks children trust – supporting children with disabilities, by dressing up as your favourite superhero or princess. We will have lots fun activities to take part in too!





Wednesday 14th July

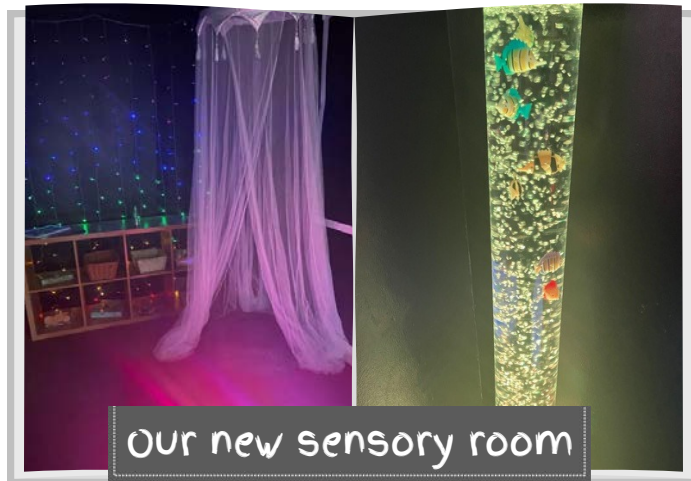
Pre-school leavers Graduation Party!

This year we will be having a dinosaur and mini beast themed party. Fancy dress, party games and lots of prizes to be won. If you would like to book your child in for an extra day please speak to Gemma, Sam or Sammy.

Thursday 15th July

Sports Day

A day filled with races, welly throwing and obstacle courses. Come wearing your fastest shoes and take part in our super sporty fun filled day.



Our new sensory room

Please can we remind parents to bring in a labelled **sun hat** for their child. Please can parents and carers ensure they are sending **weather suitable clothing** that has been labelled.



Staff News

We would like to welcome three new staff members to our team, **Kennedy, Caitlin and Louise**. **Caitlin** will be joining our Giraffe room as our new apprentice. She is very excited to have joined our team and we are very happy to have her! **Louise** is based in our Lion room and has 13 years' experience working at a primary school. We look forward to working closely with **Louise** to prepare our children for a smooth transition to primary school. **Kennedy** has joined us as a bank nursery nurse. She is already well liked by both children and staff and we can't wait for you to get to know her too!

Term Dates 21/22

Summer Term ends

Friday 16th July 2021

Autumn Term

Monday 6th Sept to Friday 17th December 2021

Autumn Break

Monday 25th to Friday 29th October 2021

Christmas Break

Monday 20th Dec to Friday 7th January 2022

Spring Term

Monday 10th January to Friday 1st April 2022

Spring Break

Monday 14th to Friday 18th February 2022

Summer Term

Tuesday 19th April to Friday 22nd July 2022

Easter Break

Monday 4th April to Friday 15th April 2022

Summer Break

Monday 30th May to Friday 3rd June 2022



LIMITED PERIOD OFFER



SHOUT IT OUT LOUD!

Ask your nursery manager for a referral form today

Refer a friend & receive £100 off your nursery fees plus they'll receive 5% off their first 2 months fees*.

*Terms & conditions apply. For full terms and conditions please see referral leaflet